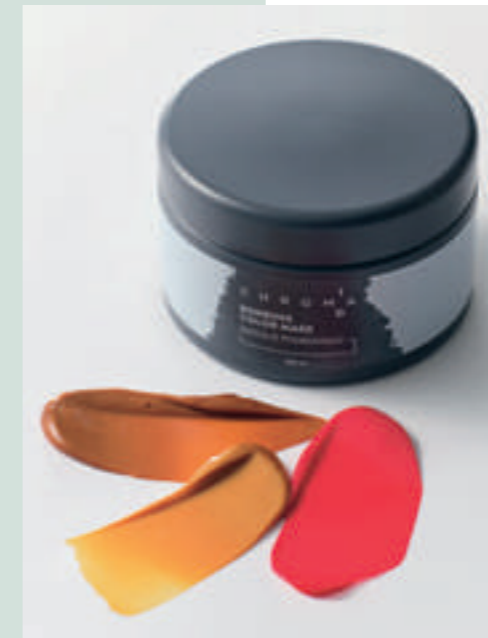


SHADE ASSORTMENT

INSTRUCTIONS FOR USE

1. Apply the mixture evenly on pre-washed and towel dried hair.
2. Leave in to develop for 10 minutes (5 minutes for subtle, 20 minutes for intense colour result).
3. Rinse well until water runs clear.



3 SIMPLE STEPS TO CREATE TAILOR-MADE MIXES FOR AT HOME MAINTENANCE

1. Mix the recommended recipe with your CHROMA ID products. Use the exact indicated mixing ratio. The filling quantity should add to at least 250g as claimed on the packaging.
2. Stick the matching, ready-at-hand ingredients list label of the chosen shade onto the jar lid. Close the lid properly.
3. Write the production batch codes of the used in-salon shade(s) onto the predefined empty space of the jar.

	CENDRÉ			BEIGE			GOLD		CHOCOLATE		COPPER		RED			PASTELS	BOLDS
	-1	-12 / -21	-19	-4	-42	-46	-49	-5	-54	-6	-68	-77	-76	-88	-94		
9.5	9.5-1 PEARL SILVER		9.5-19 DUSTY PINK	9.5-4 BEIGE SAND			9.5-49 SANDY ROSÉ 9.5-19 + 9.5-4 (3:1)									9.5-98 VIBRANT BERRY 9.5-1 + 6-88 + 8-19 (5:1:5)	
9		9-12 PLATINUM GREY			9-42 MAUVE TAUPE 8-46 + 9.5-19 (1:2)	9-46 PALE ALMOND 8-46 + Clear (10:5)		9-5 GOLD BOURBON 9.5-4 + 7-77 + Clear (3:1:3)								9-94 DUSTY THISTLE 9-12 + 9.5-4 (5:1)	
8			8-19 FROSTED LAVENDER			8-46 GLAZED CARAMEL	8-49 SILVER MULBERRY 8-19 + 6-46 (6:1)	8-54 GOLDEN MUSTARD 9.5-4 + 8-46 + 7-77 (8:8:1)	8-68 WARM CHESTNUT 9.5-4 + Red (20:1)	8-77 VIVID GINGER 7-77 + Clear (2:1)	8-76 GOLDEN CHESTNUT 7-77 + 8-19 (1:3)			8-94 MOONSTONE DOVE 9-12 + 6-46 (5:1)			
7					7-46 OAK CARAMEL 8-46 + 6-46 (1:1)				7-6 TOASTED MAROONS 6-46 + 6-88 + Clear (5:1:5)		7-77 BRIGHT COPPER	7-76 AUBURN LEAF 9.5-1 + 6-46 + 7-77 (1:1:1)					
6						6-46 RAW CACAO						6-77 DEEP AMBER 7-77 + 6-46 (3:1)		6-88 RUBY RED			
5														5-88 DEEP RUBY 6-46 + Pink (2:1)			
4		4-21 MIDNIGHT HUE 6-46 + Blue + Clear (5:2:5)															
3																	
1																	